

SPECIFICATION SUBMITTAL

Project: _____
 Architect/Engineer: _____
 Builder/Developer: _____
 Plumbing Contractor: _____

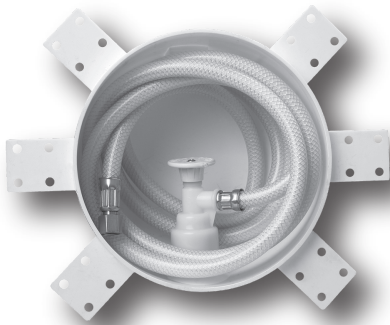


FlowTite® 4ALL®

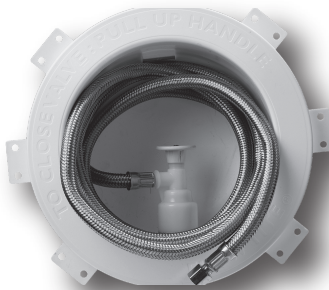
FOR PEX, COPPER & CPVC



Valve Only Model
(OBPO5-2, VBPO5-2, XBPO5-2)



One Piece Valve/Riser Model
(OBPO5-IP-2, VBPO5-IP-2, XBPO5-IP-2)



One Piece Valve/Riser Model
(OBPO5-IS-2, VBPO5-IS-2, XBPO5-IS-2)

Listings:

NSF/ANSI 61
 IAPMO File 2657 (cUPC/IPC/NPC of Canada)
 IAPMO File 6518 (Lead Free)
 IAPMO File 3893 (Outlet Boxes)

Manufactured in accordance with:

NSF/ANSI 61 Section 9 Certified
 ASME A112.18.1/CSA B125.1
 Section 1417(d) US SDWA and NSF/ANSI 372
 IAPMO PS 54

FlowTite® 4ALL® ROUND Ice Maker Outlet Boxes

Model Number	Description
<input type="checkbox"/> OBPO5-2 (Copper) <input type="checkbox"/> VBPO5-2 (CPVC) <input type="checkbox"/> XBPO5-2 (PEX)	Round high impact polystyrene box with factory installed FlowTite 4ALL valve (1/2" x 1/4" comp. outlet) for Copper, CPVC or PEX pipe. Face-plate included. Metal insert sleeve (not included) required if poly tubing is used for ice maker connection. Protective cover optional.
<input type="checkbox"/> OBPO5-IP-2 (Copper) <input type="checkbox"/> VBPO5-IP-2 (CPVC) <input type="checkbox"/> XBPO5-IP-2 (PEX)	Round high impact polystyrene box with factory installed FlowTite 4ALL valve and 84" white High Performance reinforced PVC connector x 1/4" comp. nut. For Copper, CPVC or PEX pipe. Face-plate and protective cover included.
<input type="checkbox"/> OBPO5-IS-2 (Copper) <input type="checkbox"/> VBPO5-IS-2 (CPVC) <input type="checkbox"/> XBPO5-IS-2 (PEX)	Round high impact polystyrene box with factory installed FlowTite 4ALL valve and 84" High Performance reinforced braided connector x 1/4" comp. nut. For Copper, CPVC or PEX pipe. Face-plate and protective cover included.

Design Features / Benefits

- Unique round design.
 - Strong and durable.
 - No need to level like rectangular or square boxes which eliminates call backs.
- Six tough support nailing tabs for ease of installation and superior support strength.
 - Install in any direction (up, down or sideways).
 - Three tabs on each side provide more support on the stud.
- Movable nailing brackets included for additional support when needed.
 - Brackets for additional support behind the stud or to support additional bracing if necessary for 2 x 4 or 2 x 6 walls.
- Protective cover included on models with one piece valve/riser. Optional on valve-only models.
 - Protects valve and riser from paint and dirt during rough-in stage.
- FlowTite box, valve and connectors are one integral unit.
 - One piece design eliminates the "gray area" of responsibility for the hookup from the ice maker valve to the appliance. 100% factory air tested.
- Clean white look for the builder and owner.
 - Non-corrosive, no rust, high tech look.
- Long term owner protection.
 - Health safe NSF61 material with written 10 year labor and material warranty.
- Reduced maintenance cost.
 - Valves are removable by twisting counter-clockwise.