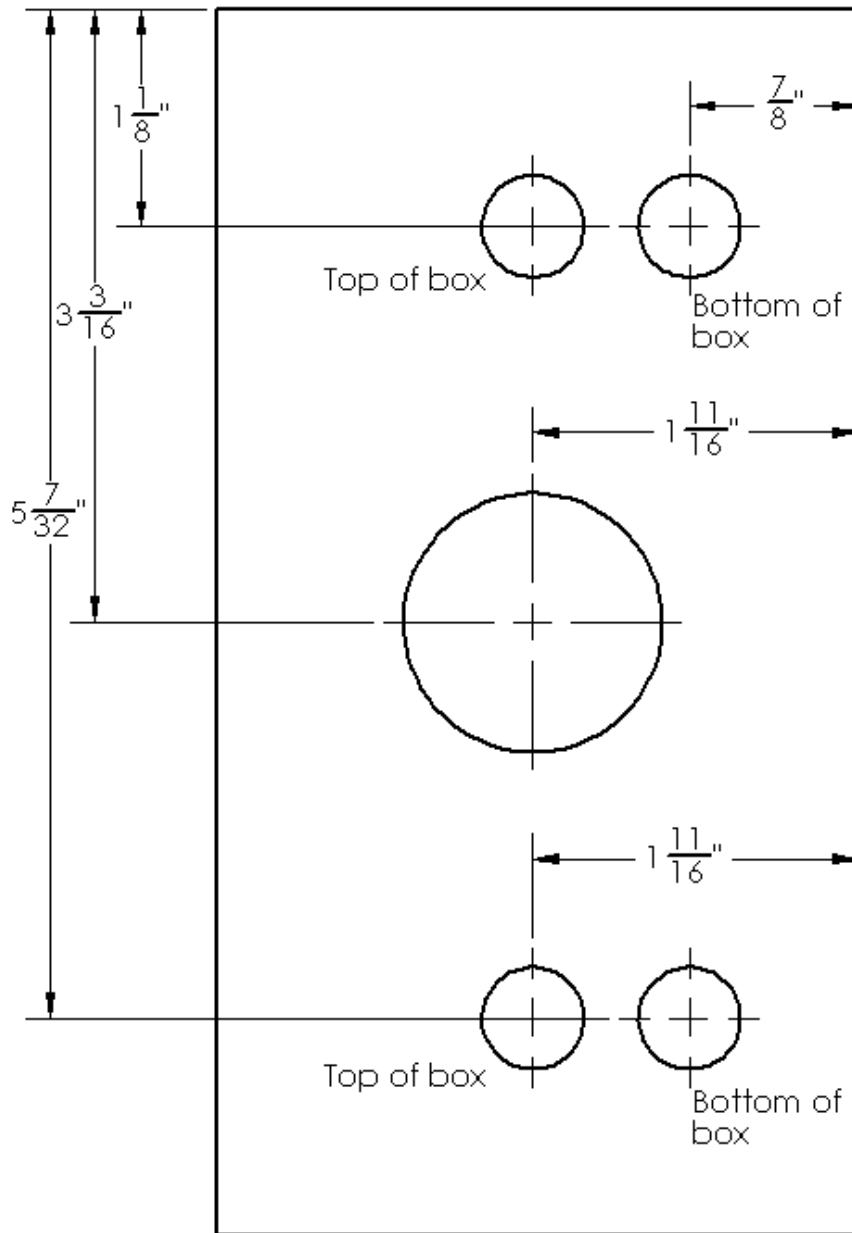


Perfect Fit Template



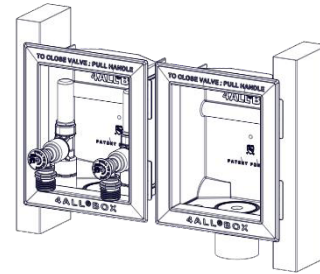
Align with front face of sill or top plate



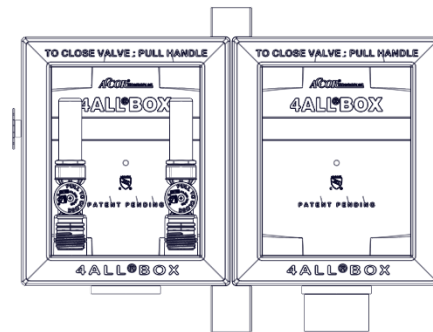
4ALL[®] BOX WASHING MACHINE

Installation Instructions

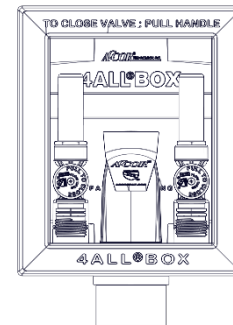
Between Studs



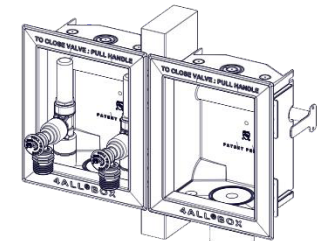
With Arresters



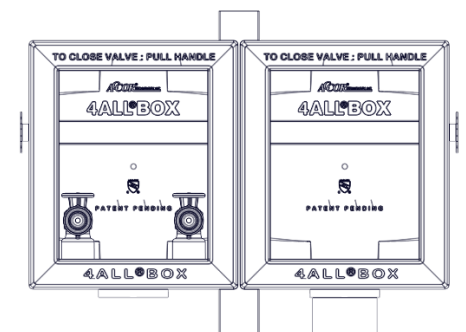
With Condensation
Drain Funnel



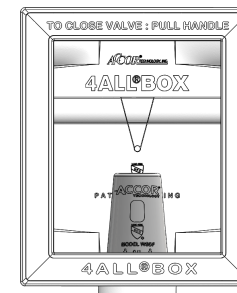
Straddling Stud



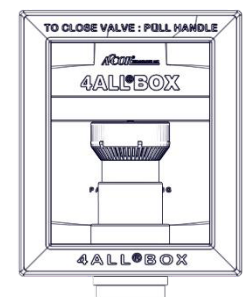
Without Arresters



With Water Softener
Funnel



With Air Admittance Valve



WARNING: Do not solder copper pipe or PEX adapters in a manner that would allow flux or other corrosive chemicals to run down the pipe into or near the valve or box. Flux contains corrosive chemicals that can damage plastic & metal components. Do not allow flux, bleach, cleaners containing acid or any other corrosive chemicals come in contact with ACCOR[®] 4ALL[®] BOX products. ACCOR Technology, Inc. does not warrant any failure due to faulty installation or abuse, stress condition, excessive water hammer, over torque, damaged pipe, exposure to below freezing conditions, excessive heat and/or corrosive chemicals and/or other destructive materials.

Determine Configuration of Boxes

